

# VI Scales

89

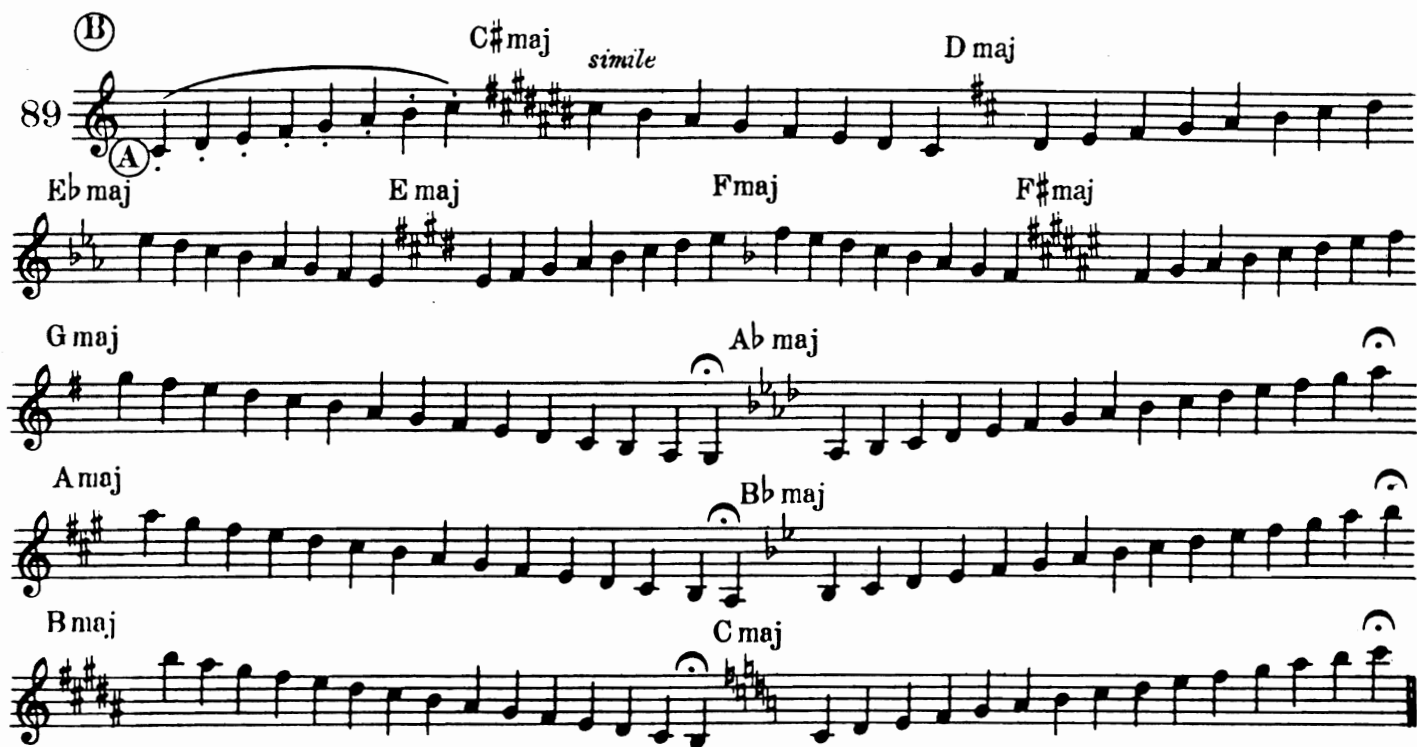
(B) C#maj *simile* Dmaj

(A) Ebmaj Emaj Fmaj F#maj

Gmaj Abmaj

Amaj Bbmaj

Bmaj Cmaj



90

Slow

*mf*



91

Allegro

*p*



This page of musical notation consists of 12 staves, arranged in six pairs. Each pair of staves is connected by a brace on the left. The first staff of each pair begins with a dynamic marking of *p* (piano). The key signature for the first four pairs is three sharps (F#, C#, G#), and for the last four pairs, it is two flats (Bb, Eb). The music is written in a treble clef and features a continuous, flowing melodic line across all staves, with notes often beamed together in groups. The notation includes various note values, including eighth and sixteenth notes, and rests. The overall texture is dense and melodic, typical of a solo piano piece.

Four staves of musical notation in B-flat major. The first staff begins with a piano (*p*) dynamic. The music consists of a melodic line with a wide interval, starting on a low note and rising to a high note, then descending. The notation includes slurs and phrasing marks.

Allegro

92 *mf molto staccato* *simile*

Two staves of musical notation starting at measure 92. The first staff is marked *mf molto staccato* and *simile*. The music features a rhythmic, staccato melodic line.

Two staves of musical notation showing a melodic line with a wide interval, similar to the first section.

*p* *simile*

Two staves of musical notation in G major. The first staff is marked *p* and *simile*. The music features a rhythmic, staccato melodic line.

Two staves of musical notation showing a melodic line with a wide interval.

*f*

Two staves of musical notation in B-flat major. The first staff is marked *f*. The music features a rhythmic, staccato melodic line.

Two staves of musical notation showing a melodic line with a wide interval.

Slow



Slow



\*94 Play chromatically lower

95

This page of musical notation consists of 12 staves. The first staff is marked with the number 95. The notation is written in treble clef and includes various key signatures: the first two staves are in C major, the next two in B-flat major, the next two in D major, and the final four in B-flat major. The music features complex melodic lines with frequent slurs, accents, and dynamic markings. The notation is dense and appears to be a technical exercise or a highly detailed musical score.



Moderato

97 *mf* molto staccato *simile*

*mf* *simile*

98 *simile*

\* To be played in A trumpet half tone lower

\*  
*simile*

Moderato  
 99  
*f sempre staccato* - *simile*

\*To be played in C Trumpet 1 tone higher



100 *f* *simile*

*f*

101 *p* *simile* C# maj

D maj E♭ maj E maj

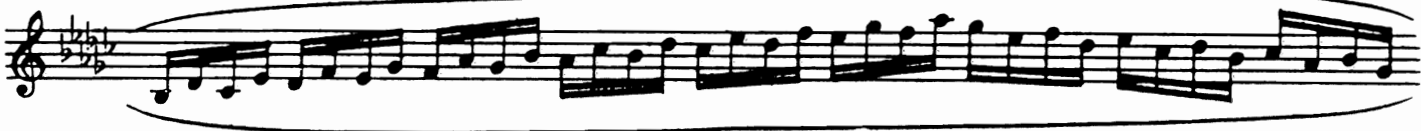
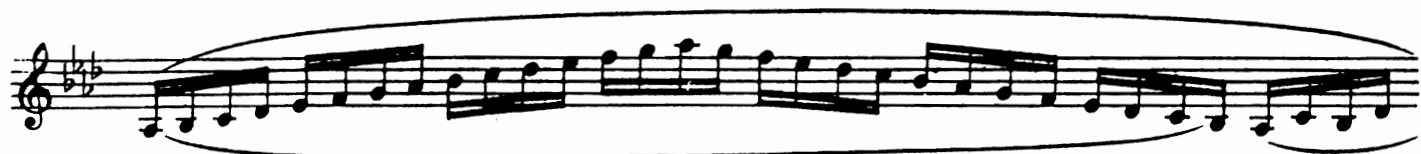
F maj F# maj G maj A♭ maj

A maj B♭ maj B maj C maj

\*102a

*p*  
*f*

\*To be played staccato



103 *p*

104

105

\*106 *mf*

*Allegro*

107

*Allegro*

108

*pp ff pp ff*

109

Musical staff 109, first system. Treble clef, 3/4 time signature. The staff contains a melodic line with a slur over the first two measures, a fermata over the first note of the second measure, and a slur over the last two measures. Fingering numbers 7 and 6 are indicated above the notes.

Musical staff 109, second system. Treble clef, 3/4 time signature. The staff contains a melodic line with a slur over the first two measures, a fermata over the first note of the second measure, and a slur over the last two measures. Fingering numbers 7 and 6 are indicated above the notes.

Musical staff 109, third system. Treble clef, 3/4 time signature. The staff contains a melodic line with a slur over the first two measures, a fermata over the first note of the second measure, and a slur over the last two measures. Fingering numbers 7 and 6 are indicated above the notes.

110

Musical staff 110, first system. Treble clef, 3/4 time signature. The staff contains a melodic line with a slur over the first two measures, a fermata over the first note of the second measure, and a slur over the last two measures. Fingering numbers 7 and 6 are indicated above the notes.

Musical staff 110, second system. Treble clef, 3/4 time signature. The staff contains a melodic line with a slur over the first two measures, a fermata over the first note of the second measure, and a slur over the last two measures. Fingering numbers 7 and 6 are indicated above the notes.

Musical staff 110, third system. Treble clef, 3/4 time signature. The staff contains a melodic line with a slur over the first two measures, a fermata over the first note of the second measure, and a slur over the last two measures. Fingering numbers 7 and 6 are indicated above the notes.

Musical staff 110, fourth system. Treble clef, 3/4 time signature. The staff contains a melodic line with a slur over the first two measures, a fermata over the first note of the second measure, and a slur over the last two measures. Fingering numbers 7 and 6 are indicated above the notes.

111

Musical staff 111, first system. Treble clef, 3/4 time signature. The staff contains a melodic line with a slur over the first two measures, a fermata over the first note of the second measure, and a slur over the last two measures. Fingering numbers 7 and 6 are indicated above the notes.

Musical staff 111, second system. Treble clef, 3/4 time signature. The staff contains a melodic line with a slur over the first two measures, a fermata over the first note of the second measure, and a slur over the last two measures. Fingering numbers 7 and 6 are indicated above the notes.

Musical staff 111, third system. Treble clef, 3/4 time signature. The staff contains a melodic line with a slur over the first two measures, a fermata over the first note of the second measure, and a slur over the last two measures. Fingering numbers 7 and 6 are indicated above the notes.

Musical staff 111, fourth system. Treble clef, 3/4 time signature. The staff contains a melodic line with a slur over the first two measures, a fermata over the first note of the second measure, and a slur over the last two measures. Fingering numbers 7 and 6 are indicated above the notes.

Vivace

112 

C#maj 

Dmaj *simile* Ebmaj 

E maj F maj 

Variant for Ex. 112



113 F#maj 

G maj 

Abmaj 

A maj 

Bbmaj 

Bmaj 

C maj 

Variant for 413

Allego

114

*molto staccato*

*simile*

115